

**Task #2: Collect samples of a new species of crustacean**



Figure #1: Cave opening 80cm by 80cm



Figure #2: Cave opening 2

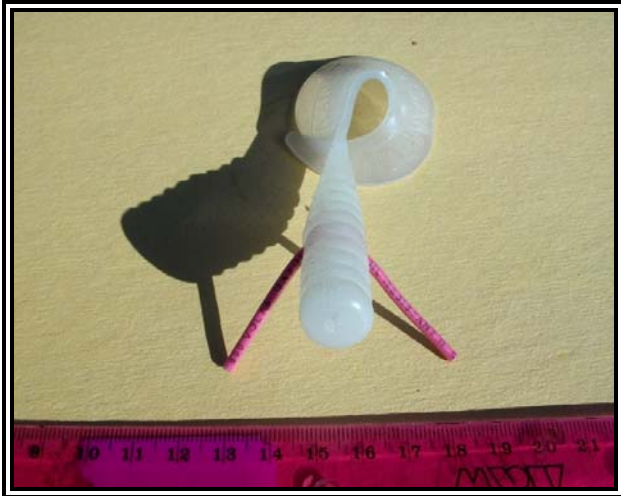


Figure #3: Crustacean on floor, front view

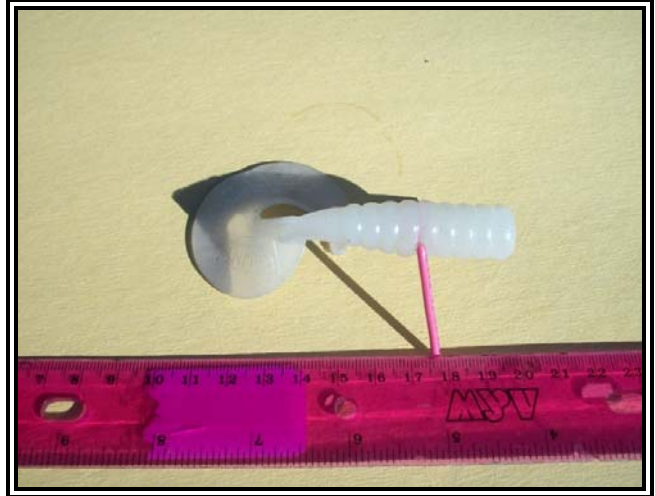


Figure #4: Crustacean on floor, side view #1

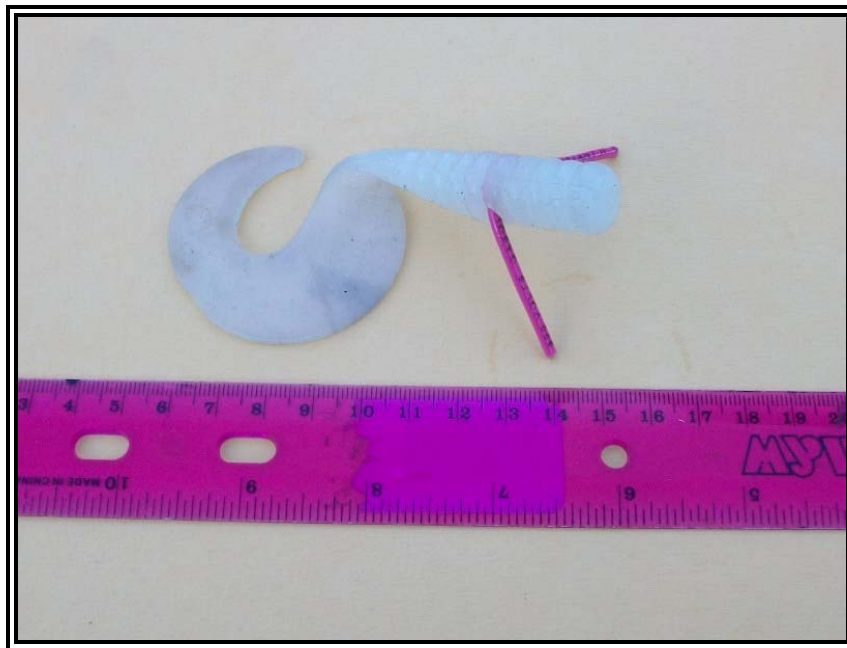


Figure #5: Crustacean on floor, side view #2



Figure #6: Crustacean on wall, side view #1



Figure #7: Crustacean on wall, side view #2



Figure #8: Crustacean climbing on wall